

# HD4000 Display Set-up and Recommendations Guide

## Plasma vs. LCD

When choosing a wide-screen display for your HD4000, you have two options: plasma display or LCD display. Listed below are some general guidelines to follow when choosing the right wide-screen display. Your reseller will also have valuable input that you should consider.

### Plasma:

Generally less expensive than LCD

Can have issues with burn-in, although the HD4000 supports running the screen saver.

On smaller plasmas (42") the pixel resolution is generally low (853 x 480) and it will compress the picture to make it fit, which will result in lower quality. Larger plasmas (61") generally have a 1280 x 768 pixel resolution, which is optimal.

Dot Pitch: Generally, the higher the refresh rate, the better the quality. However, the dot pitch should be below 100 and optimally at 80 to 85.

### LCD:

Generally more expensive than Plasma

No burn-in issues

Generally agreed to have a longer life

Have better pixel resolution at smaller screens (40") than plasmas and therefore give better pictures.

### Resolution:

The wide-screen display you choose must support 1280 x 768 resolution. Most plasmas and LCDs support this resolution, but not all do, especially some of the smaller plasma displays.

## Display Video Input

When choosing which type of connector to use to connect your display to the HD4000 there are several possibilities. See

below for the available options, listed in order of video quality:

**DVI:** Gives the best quality, but not all plasmas and LCDs have a DVI input Use a DVI to DVI cable - must be purchased separately. You can use a DVI to HDMI adapter to connect also to HDMI input on you display.

**VGA:** If the display does not have a DVI input, the HD4000 ships with a DVI to VGA adaptor, which would then be connected to a VGA to VGA cable.

**S-video:** Most displays have an s-video input. The HD4000 includes the cable that is used for an S-video display (Video Out Adaptor Cable).

**Composite:** Most displays have a composite input. The HD4000 includes the cable that is used for a Composite display (Video Out Adaptor Cable).

## Display Options - Single and Dual Monitor



The HD4000 can be set up in several ways:

Wide screen display (plasma/LCD): Use Native DVI connection

Dual wide screen displays: Use native DVI for the main display; use the Video Out Cable for the second display.

Single TV: To connect to a single TV, use the Video Out cable to connect with either an S-video or Composite connection.



Single HDTV: Use the DVI output connector.

Single VGA: Use the VGA cable to connect a large screen VGA monitor

VGA + TV: Use the VGA output cable for main monitor; use the Video Out cable for the second monitor



## How to setup the HD4000 in Single TV mode?

**Step 1:** Make sure the HD4000 PC is turned off

**Step 2:** Connect the TV's S-Video IN (or Composite IN) to the Video Out port on the HD4000

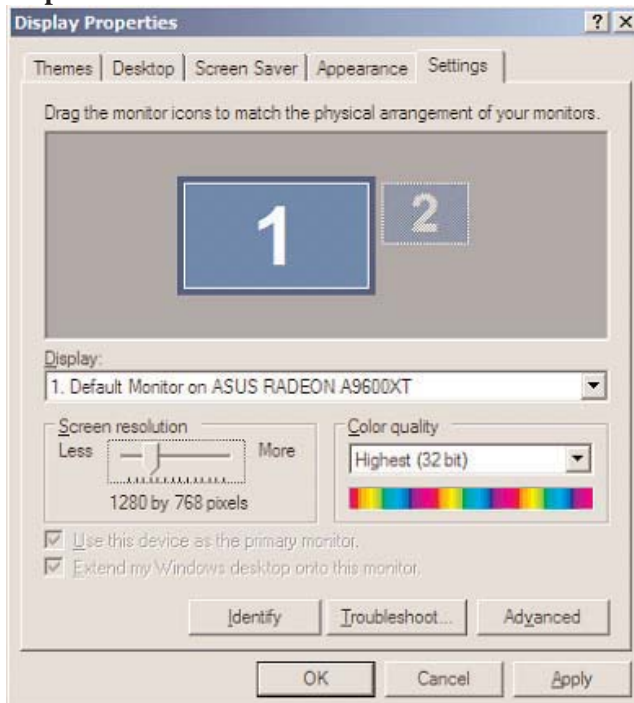
**Step 4:** Turn on the HD4000 PC and the application will appear in the TV monitor

## How to switch the system from 4:3 to 16:9 display ratio?

**Step 1:** Close the HD4000 application

**Step 2:** Right click on the mouse over desktop and select Properties > Settings tab

**Step 3:** Select "1" and set it to 1280x768 resolution



**Step 4:** Click on the "Apply" button

**Step 5:** Restart the HD4000 application

## How to switch the system from 16:9 to 4:3 display ratio?

**Step 1:** Close the HD4000 application

**Step 2:** Right click on the mouse over the desktop and select Properties > Settings tab

**Step 3:** Select "1" and set it to 1024x768 resolution

**Step 4:** Click on the "Apply" button

**Step 5:** Start the HD4000 application